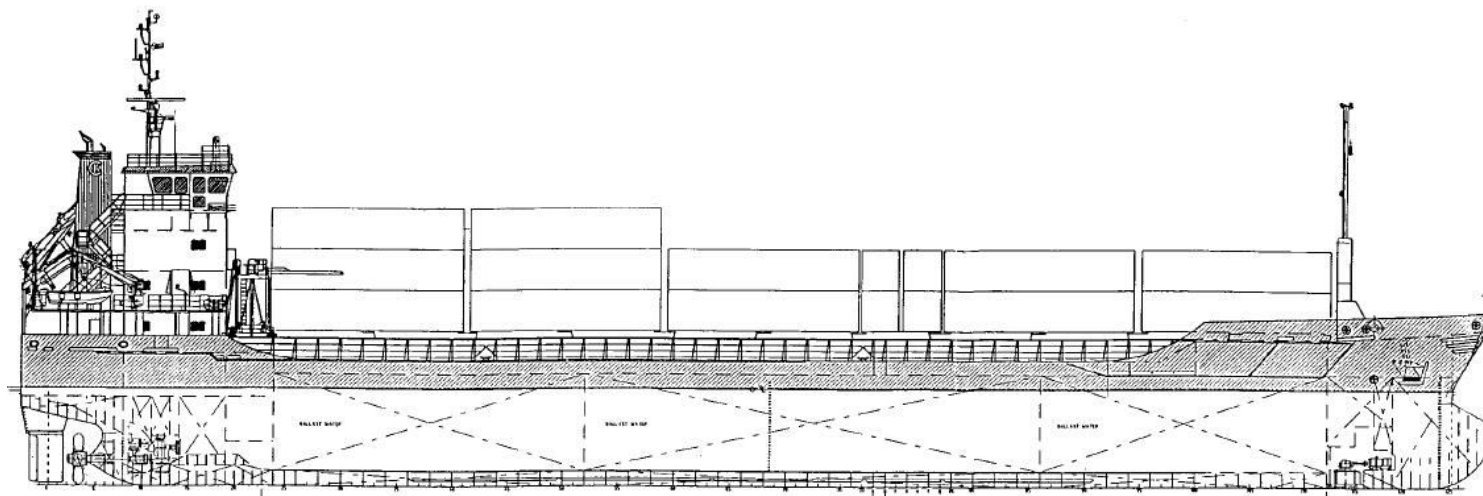




Hermann Lohmann Bereederungen
GmbH & Co. KG
Ship Management



Name ELENA (IMO 9195901) – A&B Flag
Shipyard Damen Hoogezand, NL
Built 2001
Type gearless singledecker

Classification DNVGL
1A General dry cargo ship Container EO
Ice(1A) Strengthened(IB)

Main Dimensions

| | | |
|-------------------------------|-------|---|
| Length over all | 94,96 | m |
| Length between perpendiculars | 90,05 | m |
| Breadth moulded | 13,17 | m |
| Draught moulded | 6,20 | m |
| Air Draught (incl. draught) | 24,80 | m |
| Depth to maindeck moulded | 7,15 | m |
| Clear height in hold | 8,45 | m |

Deadweight (about)

| | | |
|---------------------------|-------|-----|
| at 6,20m draught (summer) | 4.950 | tdw |
| at 6,07m draught (winter) | 4.800 | tdw |

Measurement

| | |
|-------|------------|
| GT/NT | 2.997/1707 |
|-------|------------|

Service-Speed (bft 2, even keel) 11,50 knts

Main Engine

| | |
|---------------------|---------|
| 1 of MaK | |
| 8M 25 - Rated power | 2400 kW |
| Propeller | 1 x CPP |

Consumption at sea IFO180/MGO/day fully laden 7,0/0,25 mts

Consumption in port MGO/day idle 0,50 mts

Reduction gear

1 reduction gear

Auxiliary engines

- 2 Diesel generator sets, Catapiller 145 kw -50Hz
- 1 emergency/harbour generator set type Catapiller, 62 kw -50Hz
- 2 starting air compressors
- 3 Separators: 1x IFO, 1x MGO, 1x Luboil
- 1 Fuel oil trim pump
- 1 bilge water separator, acc. to Marpol regulations
- 2 bilge/ballast pumps, each 200 m³/hr a 2,80 bar
- 2 Fire Fighting pumps
- 1 sewage pump
- 1 freshwater pressure set
- 1 CO₂ Fire Fighting system for engine room and cargo hold

Bowthruster

1 x FPP type fishtail - Output 300 kW

Tank capacities

| | |
|---------------|------------|
| Ballast | 1586,52 m³ |
| IFO | 327,02 m³ |
| MGO | 36,75 m³ |
| Potable water | 44,63 m³ |

Steering Gear

Electrical hydraulic steering gear

Anchor and moving winches

- 1 electrical driven bow anchor winch with two warping heads
- 1 electrical driven capstan aft

Weather deck hatch covers

Steel pontoon hatches with 1 gantry crane

Dimensions approx 67,54 x 11,00 m

Air change elec. driven 6 times

Cargo capacity

Boxshaped hold narrowing fore and aft; see separate drawing
Hold (grain) 6180 m³/218.245 cbft
Dimensions cargo hold l x w x h 67,54 x 11,00 x 8,45 m
Square meter capacity tanktop/hatch 19,00/1,60 mts

Cargo Hold

Bulk- and grain cargoes, general cargoes,, paper products, steel cargoes, etc., IMDG-Code 1.4S, 2, 3, 4, 5.1, 6.1, 8; BC-Code 4.1, 4.2, 4.3 (FeSi), 5.1, 6.1, 6.2, 7, 8, 9

Deck layout

Rudder, Becker type
Container fittings on tanktop and on hatch covers
Lashing eyes in hold and outside of coaming
Moveable grain bulkhead (2 pcs) with 13 stowage positions

Container intake

| | |
|--------------|----------------|
| In hold | 120 TEU |
| On hatch | 104 TEU |
| Total | 224 TEU |

Communication equipment

According GMDSS for Area A3, eMail-Terminal

Accommodation

For Captain and Crew of a total 10 persons with heating, ventilation and air-conditioning

Details are given in good faith, believed to be correct, but without guarantee.
All figures to read "about" and not to be used for T/C-descriptions Speed basis max. beaufort 2, no swell and no adverse currents. Any Days during which the vessel encounters conditions exceeding these weather conditions are expressly excluded regarding performance evaluation.