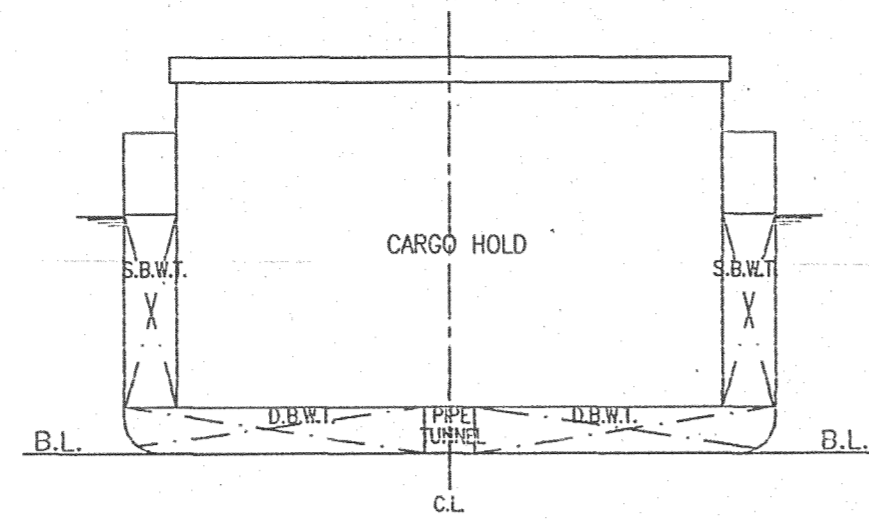
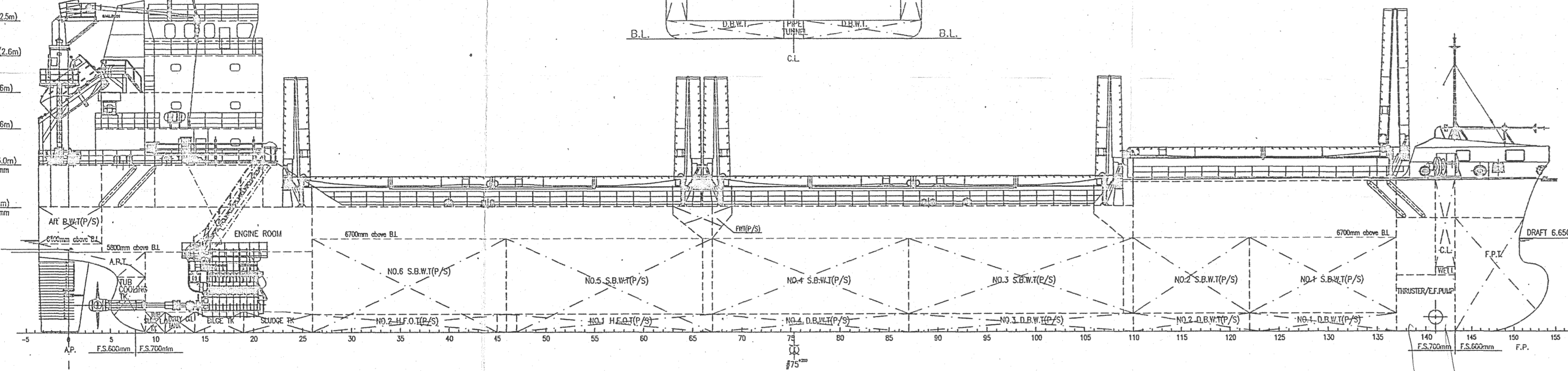


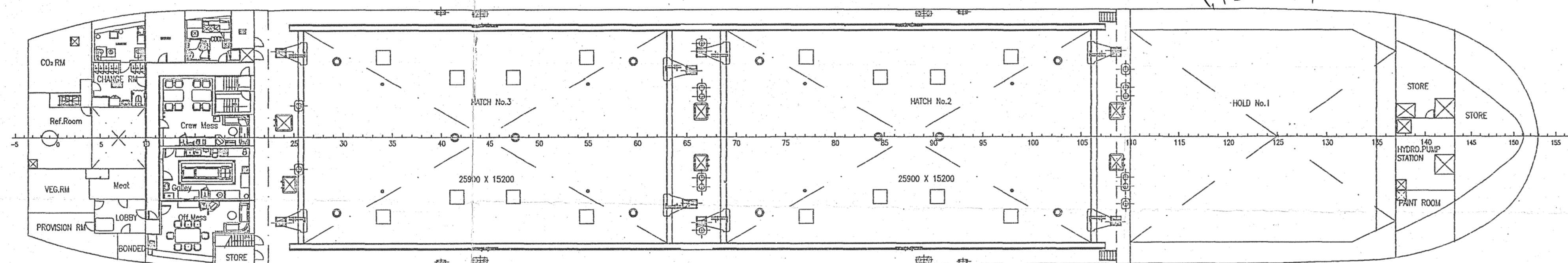
MID. SECTION



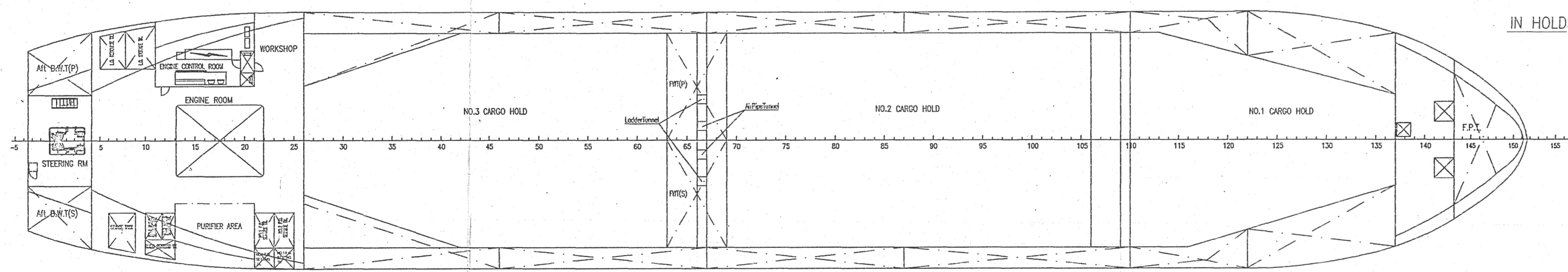
- COMPASS DK (2.5m) Comber 1/3
- BRIDGE DK (2.6m) Comber 1/3
- No.2 DK (2.6m) Comber 1/3
- No.1 DK (2.6m) Comber 1/3
- POOP DK (3.0m) Comber 50mm
- Depth (9.0m) Comber 50mm



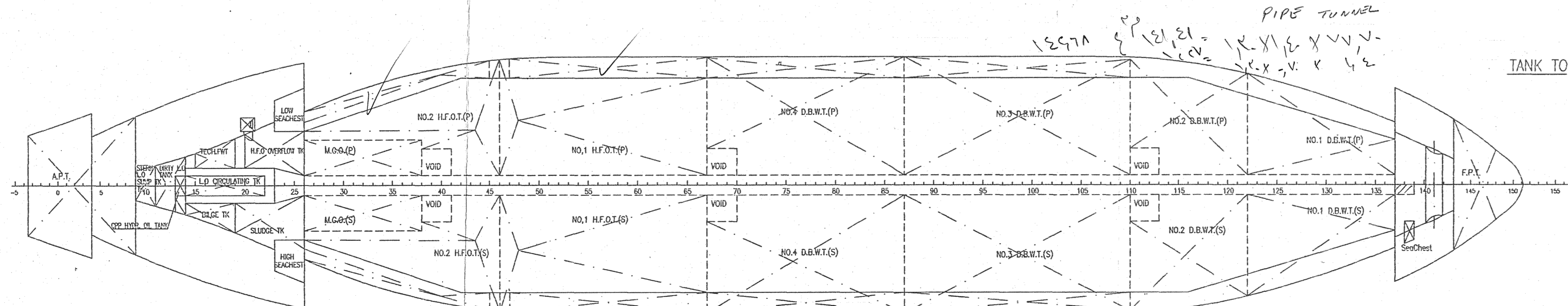
MAIN DECK



IN HOLDS



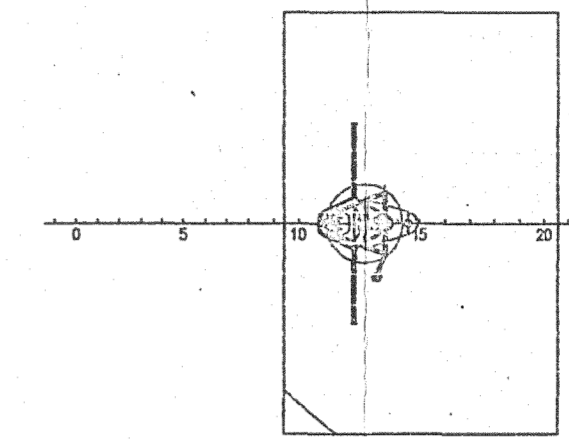
TANK TOP



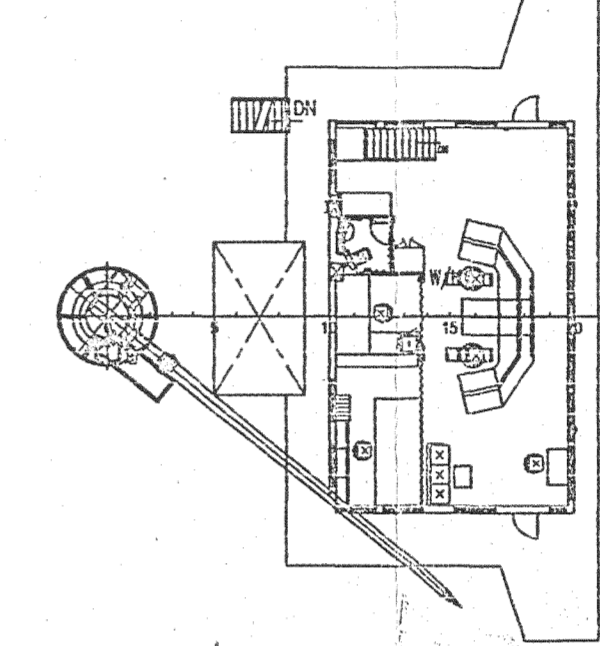
MAIN DIMENSIONS

LENGTH OVER ALL	~108.40m
LENGTH BETWEEN PERPENDICULARS	103.90m
BREADTH MOULDED	18.20m
DEPTH MOULDED	9.00m
DRAUGHT DESIGN	5.50m
DRAUGHT SCANTL	6.65m
DEADWEIGHT (at d=6.65 m)	7600DWT
MAIN ENGINE	MAN B&W 7S26HC 1set
SERVICE SPEED	12.4 Knots
at designed draft with 90ZMCR	
COMPLEMENT	13P

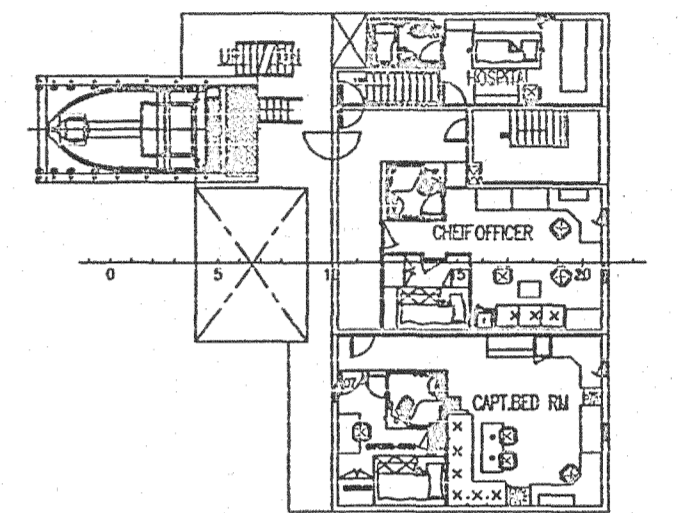
COMPASS DECK



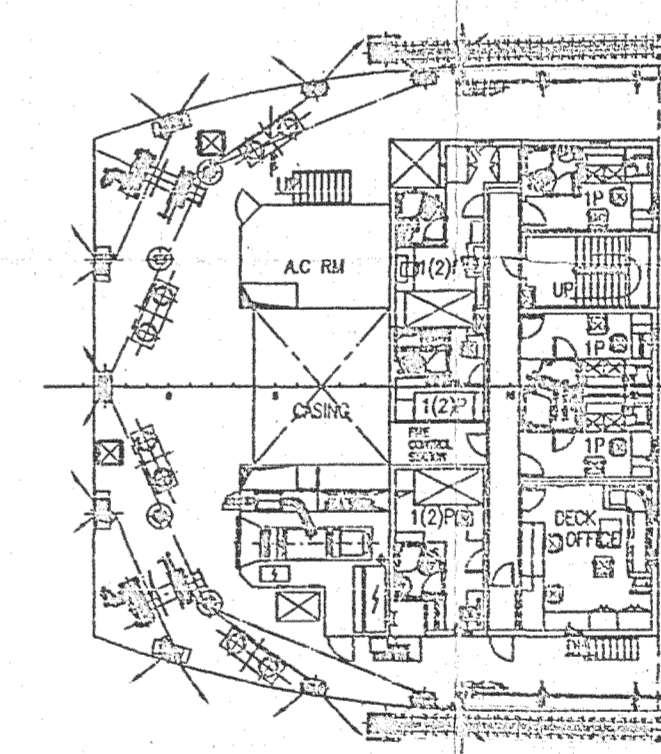
BRIDGE DECK



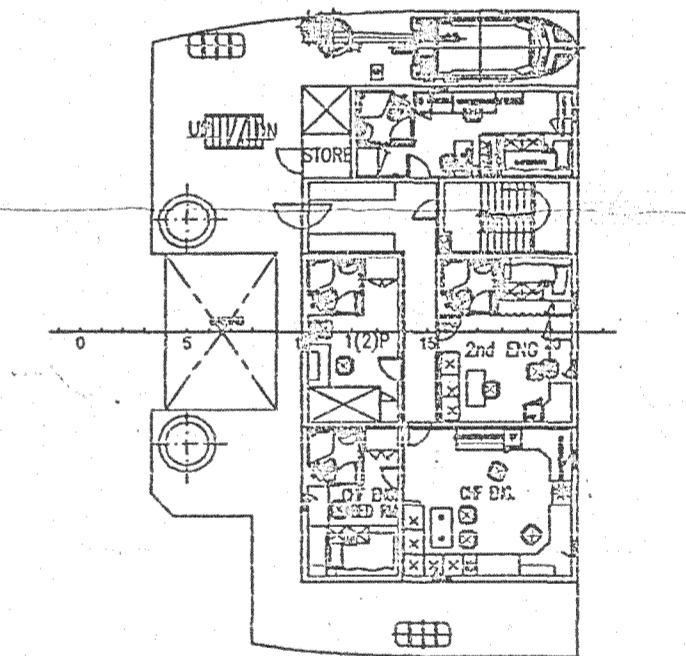
NO.2 DECK



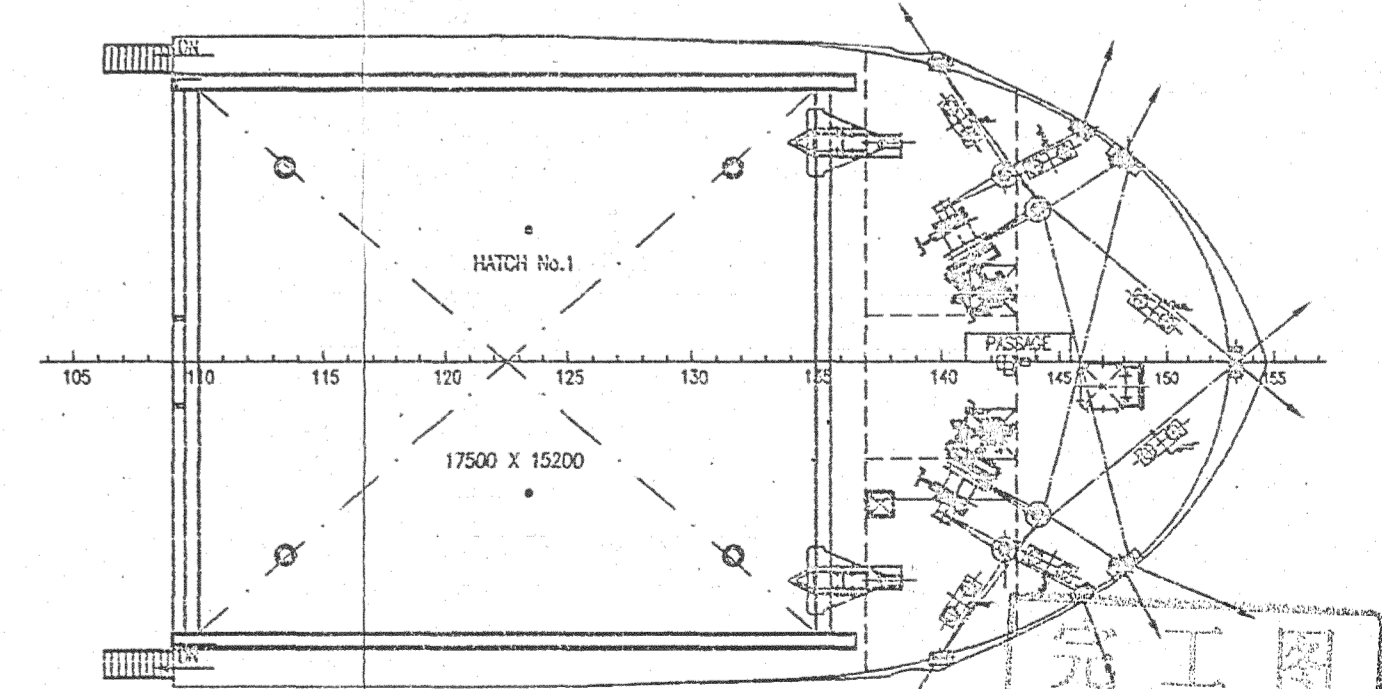
POOP DECK



NO.1 DECK



FORECASTLE DECK



BUILDER	YANGZIJIANG/SUMEC SHIPYARD	SHIP'S NO.	172003-0370-000
DESIGNER	MARINE DESIGN & RESEARCH INSTITUTE OF CHINA		JSS030-C01-004
	7600DWT BULK CARRIER	DETAIL DESIGN	
			Q84.4194.100.002
			图 号 图 名 图 号
			1:200
			第 1 页 共 1 页
			MARIC
			比例: 0.50m

PIPE TUNNEL
15971

$10.91 = \sum 0.9V = 0.9 \times 12 + 0.9 \times 12 = 21.6$
 $10.9 = \sum 1.7 = 1.7 \times 6 = 10.2$