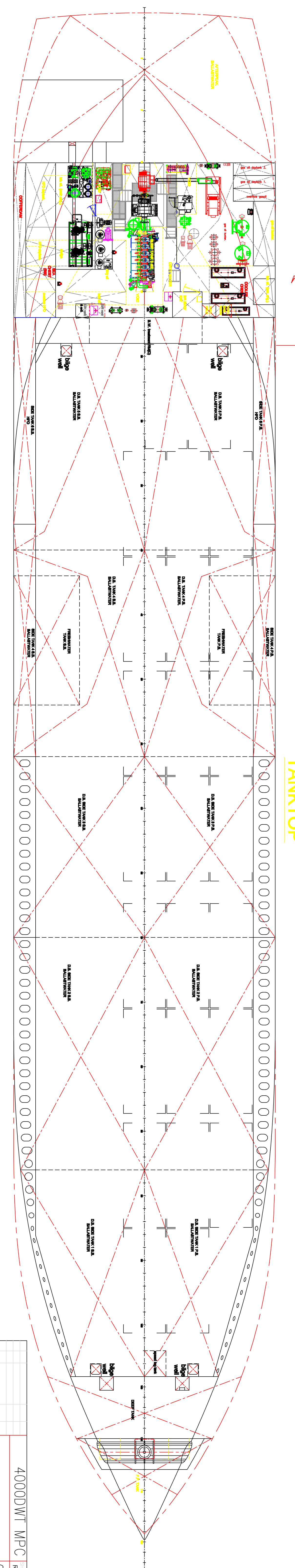
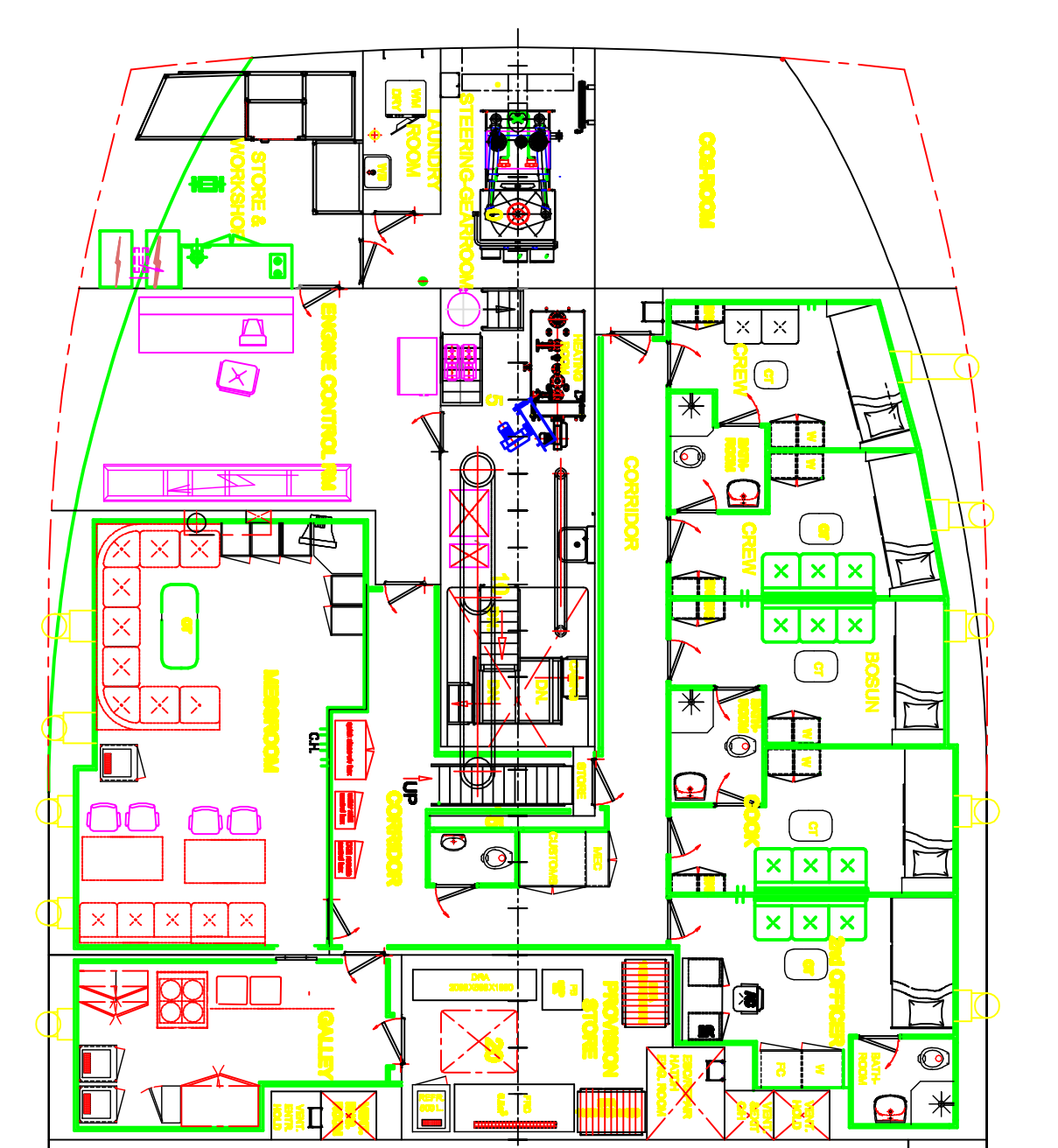
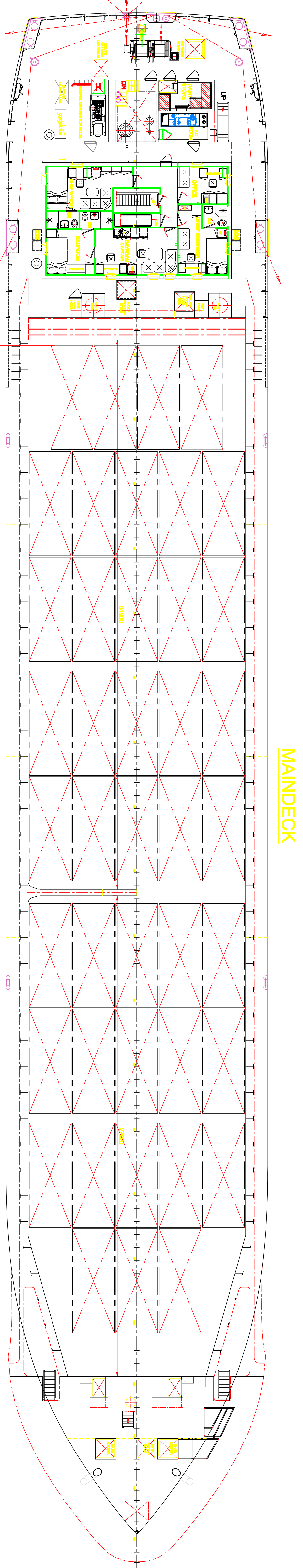
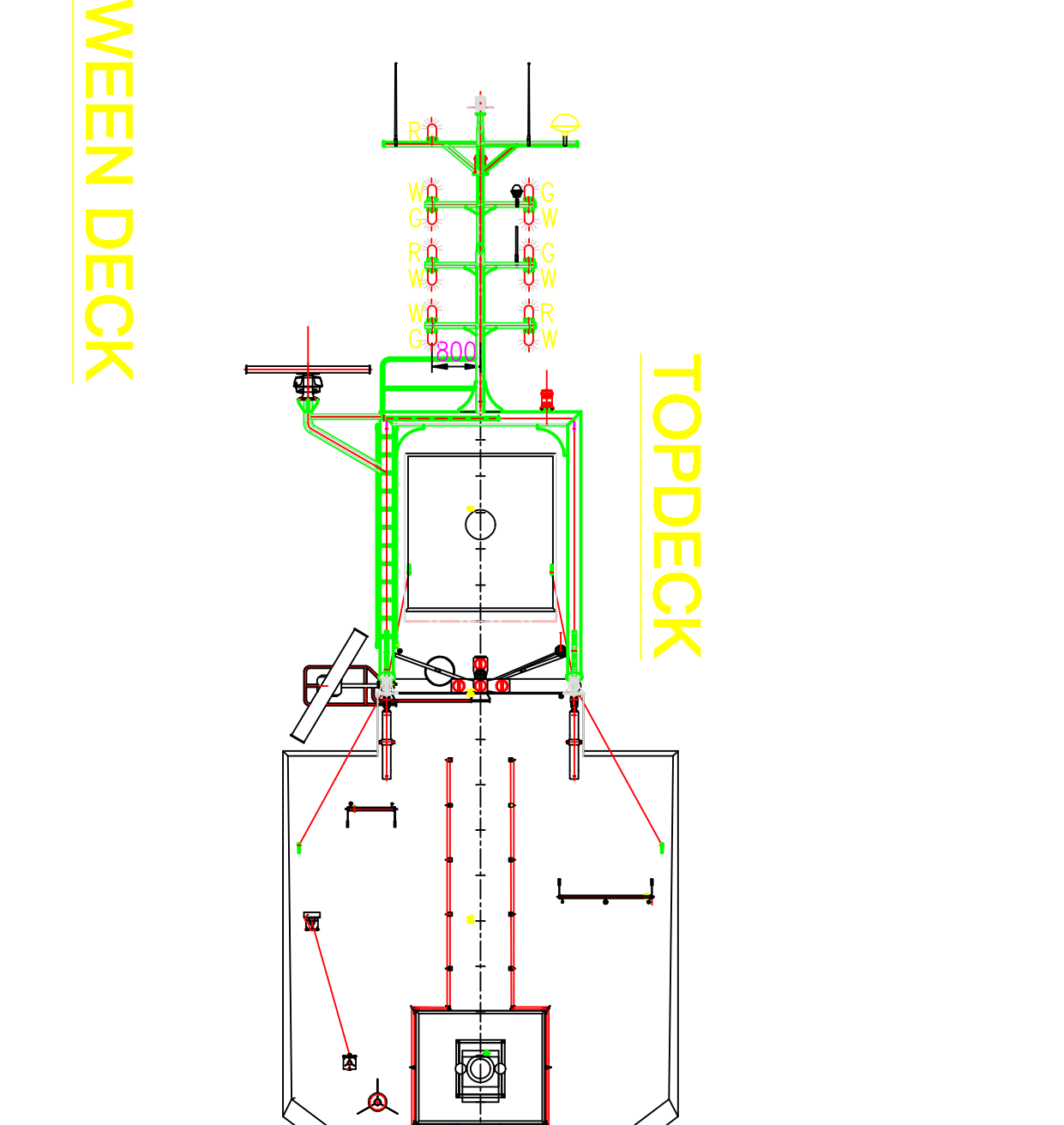
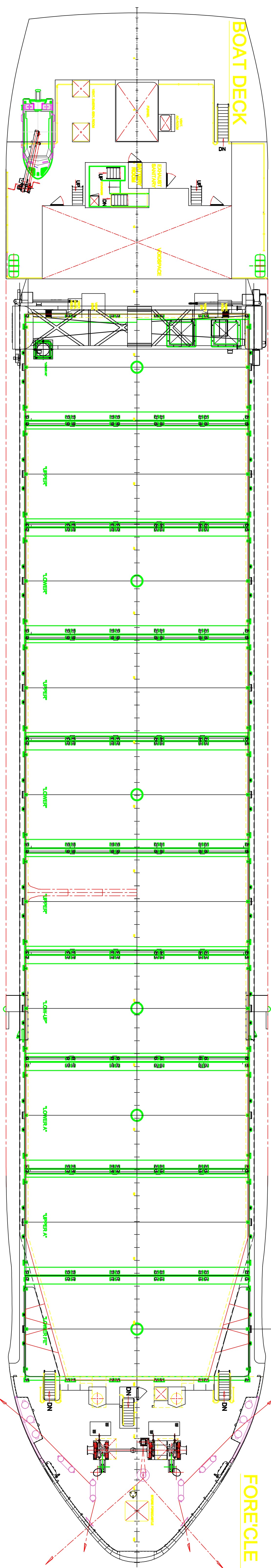
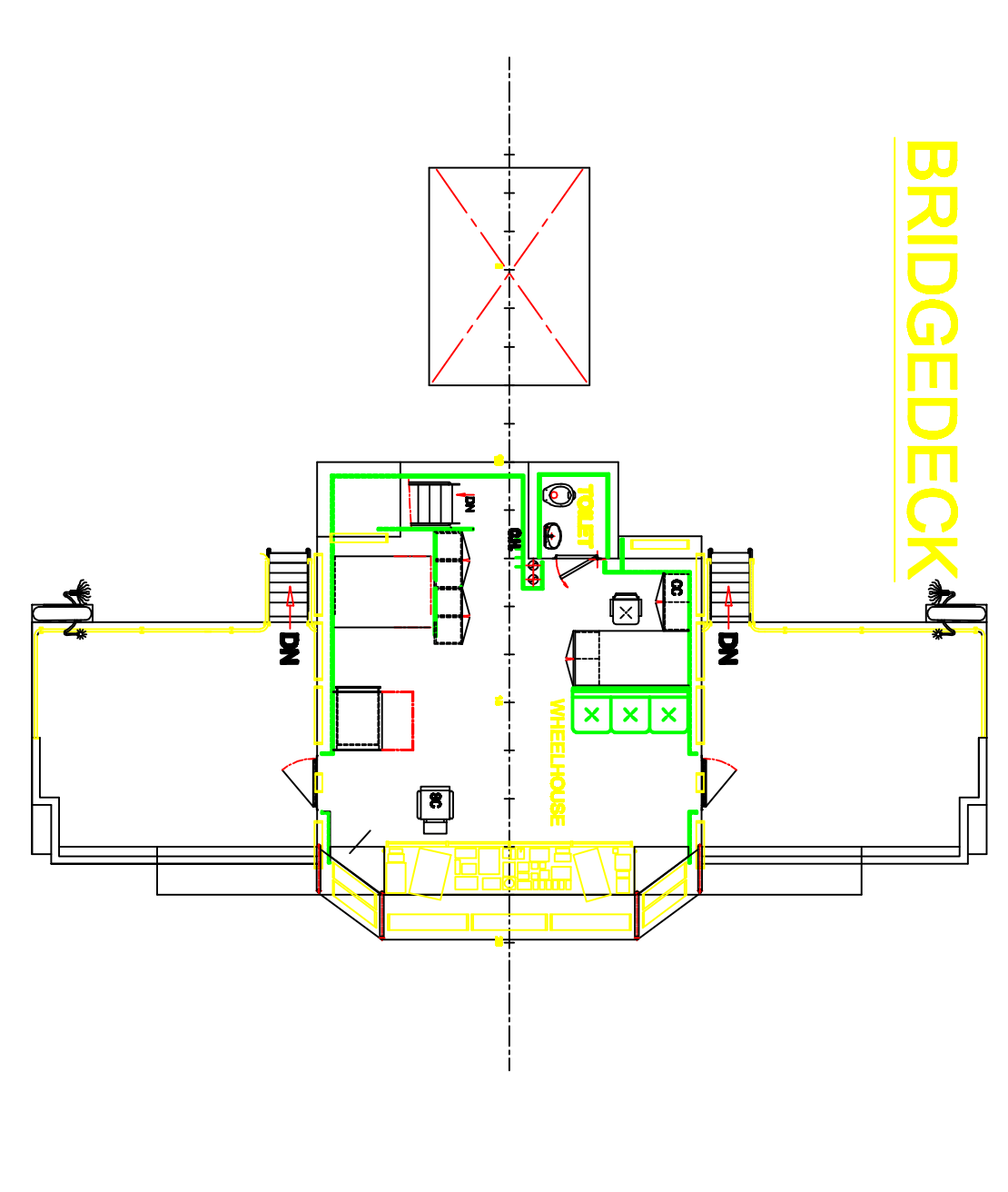


**MAIN PARTICULARS**

Length overall	82.88	mtr
Length between perpendiculars	73.40	mtr
Breadth moulded	15.20	mtr
Depth to maindeck	6.60	mtr
Container securing dunnage (total gross bulkheads)	appr. 4000	ton
Design draft (m) (25 m (86.6, 1.010))	4.80	mtr
Design draft (m) (25 m (86.6, 1.010))	appr. 3200	mtr
Design draft (m) (25 m (86.6, 1.010))	15.40	mtr
Tonnage Regulation (London 1989)	< 3,000	GT
Grain capacity (total bulkheads)	217,000	dwt
Container capacity in hold	126	TEU
Container capacity on hatch	50	TEU

*Generalship 1147*  
 \*ASDA 30, AHT11 - PURPOSE BUILT Strengthened & Heavy Carriage  
 Equipped for carriage of containers  
 \*\*MC ALIV, TML, SOLAS II, 2 Reg.19 Class 1, 4, 2, 3 & 5, 6 & 9



40000DWT MPC  
 40000DWT MPC  
 Rongcheng SKS152  
 OM-L090611-  
 GENERAL ARRANGEMENT  
 ODEBIX